

TS25C

SAFETY RELIEF VALVE

1/4" UP TO **40 BAR 580 PSI**



The TS25C is a cartridge style safety relief valve for use in manifold applications. Designed with an elastomeric seat seal, the valve combines excellent leakage performance with a high discharge flow capacity from its pop-open characteristic.

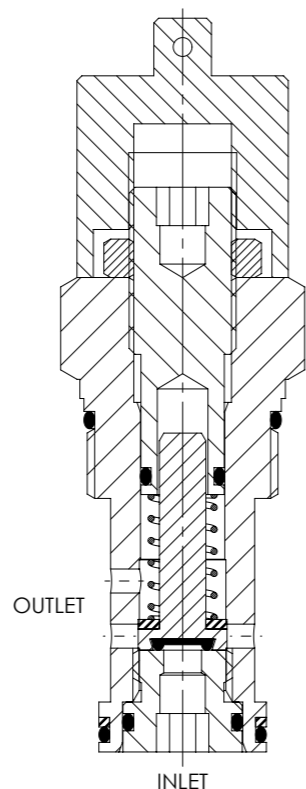
The valve is approved as a safety accessory to category IV of the Pressure Equipment Directive, and is suitable for use in the most demanding liquid or gas applications.

- Approved to category IV of the Pressure Equipment Directive (2014/68/EU)
- Pop-open characteristic for maximum discharge capacity
- Available preset with hidden external adjustment
- Compatible manifolds and flanged pipework available. Contact us for advice
- Wire locking and tagging available on request
- Virtually zero leakage at 90% of set pressure
- Reseat within the greater of 5 psi or 7.5% of set pressure when valve has opened and not popped
- Reseat within 50% of set pressure once popped
- Repeatability within the greater of 2 psi or ±3% of nominal set pressure

Specifications

BASIC MODEL NUMBER	TS25C
SYMBOL	
MAX WORKING PRESSURE	40 bar (580 psi)
MAX OUTLET PORT PRESSURE	10 bar (145 psi) <i>Note: Any outlet port pressure is directly additive to the set pressure</i>
ORIFICE SIZE	Ø5.0mm (Ø.197")
FLUID	Liquids and Gases <i>See materials section</i>
TEMPERATURE RANGE	<i>See Product Selector opposite and Technical Data section</i>
NOMINAL SIZE	1/4"
WEIGHT	0.3 kg (0.7 lb)

Specifications may change without notice



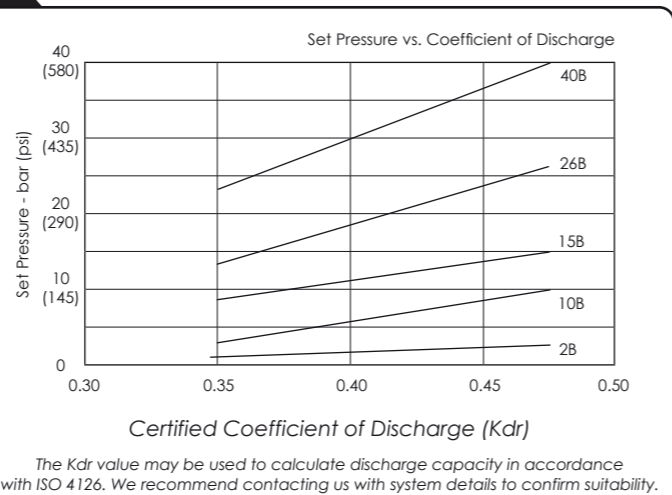
Materials

Externally Exposed Parts: 316 stainless steel.
Internally Wetted Parts: 316 and 302 stainless steel, and acetal.

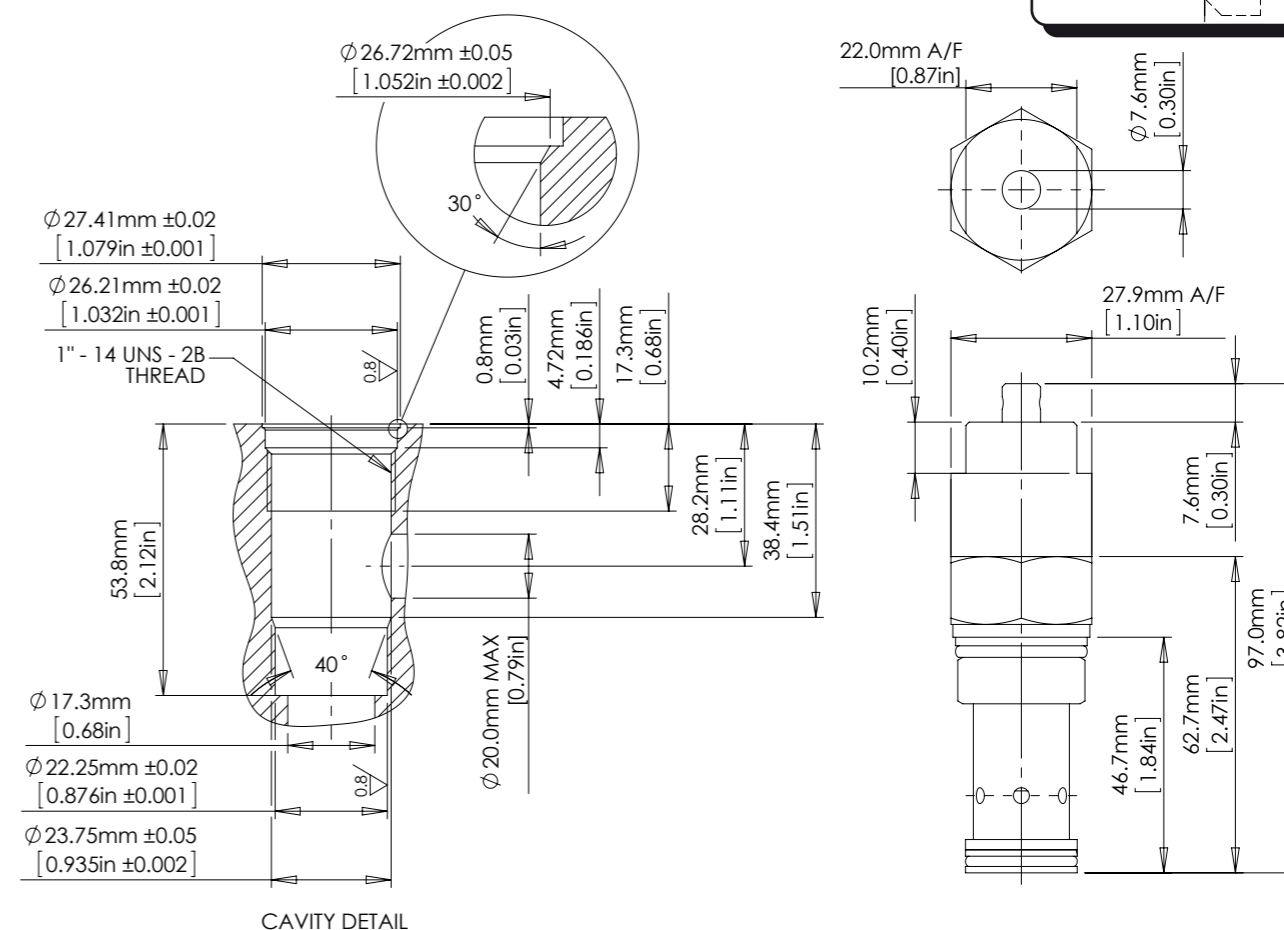
The standard valve is designed for use with air, nitrogen, sweet natural gas, mineral oil, water glycols and plain water, and may also be used with a wide variety of media compatible with the materials of construction. Other material options are available, contact us for advice. Note that use with water above 100°C is not recommended.

The standard valve has Viton® seals. Further seal options are available via the Product Selector. Compatibility with the working fluid at the operating temperature must be considered.

Typical Performance



Installation Diagram



Product Selector

TS25C - NBR - 2B		
VALVE TYPE	SEAL OPTIONS	SET PRESSURE RANGE
TS25C	Leave blank for Viton® seals -10°C to +120°C	2B 0.7 - 2 bar (10 - 29 psi)
	NBR Nitrile seals -30°C to +105°C	10B 2 - 10 bar (29 - 145 psi)
	EP EPDM seals -45°C to +120°C	15B 8 - 15 bar (116 - 218 psi)
	KLZ Kalrez® seals -25°C to +120°C	26B 13 - 26 bar (189 - 377 psi)
	HNBR Hydrogenated Nitrile seals -20°C to +120°C	40B 23 - 40 bar (334 - 580 psi)

Repair and seal kits are available on request

For a seal kit add SK at the end of the model code and for a repair kit add RK

Further seal options are available on request

Advise us of set pressure if factory pre-setting is required



SOLENOID
FLOW CONTROL
3 PORT DIRECTIONAL CONTROL
4 PORT DIRECTIONAL CONTROL
CHECK AND SHUTTLE
PILOT OPERATED CHECK
RELIEF
EXCESS FLOW
FILTERS
PRESSURE SENSING
PUMPS
ACTUATORS
TECHNICAL DATA