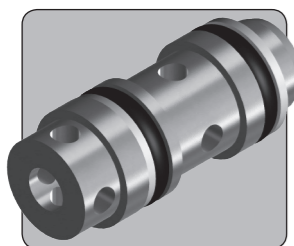


SV25C SHUTTLE VALVE

1/4" UP TO 276 BAR 4,000 PSI



The SV25C is a cartridge shuttle valve. The valve will sense the higher of two pressures and send this pressure to the outlet. The valve is often used to provide redundancy on pilot systems. In the event of pressure loss on one inlet, the valve will automatically switch to the higher pressure supply.

The valve includes a stainless steel and ceramic seating design to provide a robust low leakage solution.

- Shuttle valve
- Stainless steel construction
- Versatile cartridge insert design
- Compact design
- Ideal for combining dual redundant pilot supplies
- Suitable for use with mineral oils, water glycols, plain water and sea water
- Suitable for many other media. Contact us for advice
- NACE MR01-75 compliant materials
- Various seal options available

Specifications

BASIC MODEL NUMBER	SV25C
SYMBOL	
MAX WORKING PRESSURE	276 bar (4,000 psi)
CV (FLOW CAPACITY)	0.33
FLUID	Liquids only See materials section
TEMPERATURE RANGE	See Product Selector opposite and Technical Data section
NOMINAL SIZE	1/4"
WEIGHT	0.02 kg (0.04 lb)

Specifications may change without notice

Materials

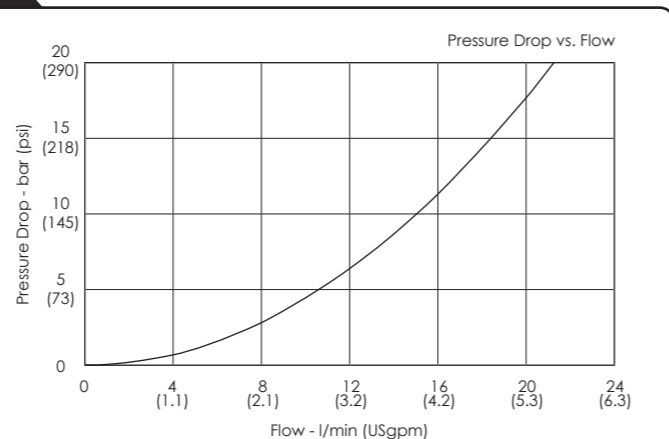
Externally Exposed Parts: 316 Stainless Steel.

Internally Wetted Parts: 316 Stainless Steel and Silicon Nitride ball.

The standard valve is designed for use with mineral oils, water glycols, plain water, sea water and may also be used with a wide variety of media compatible with the materials of construction.

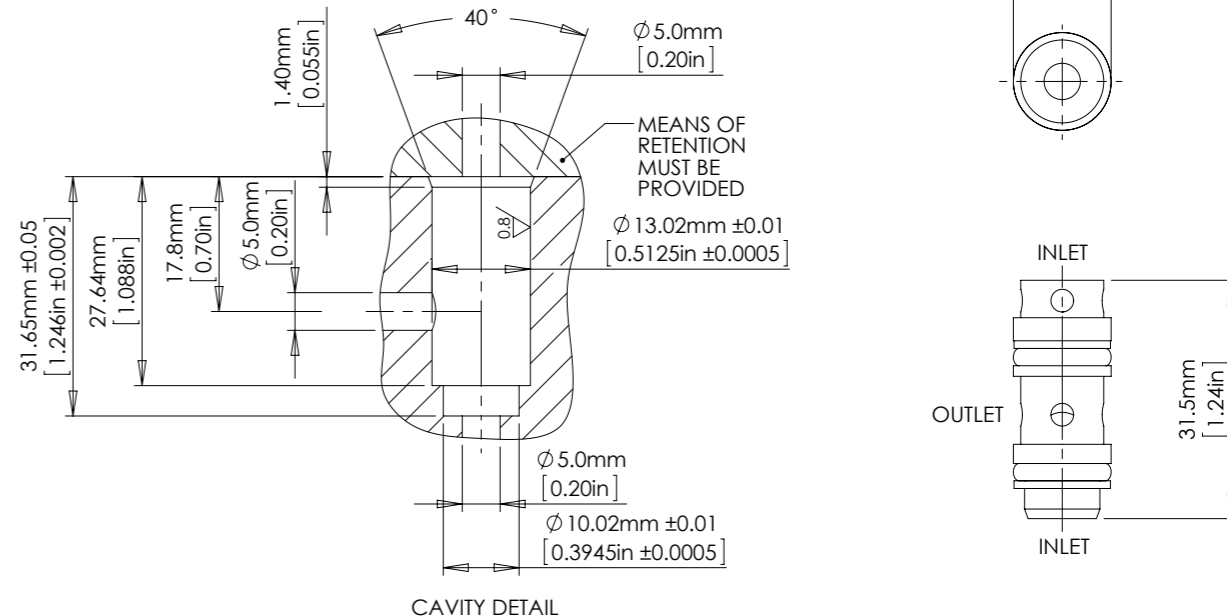
The standard valve has Viton® seals. Further seal options are available via the Product Selector. Compatibility with the working fluid at the operating temperature must be considered.

Typical Performance



Typical performance based on water

Installation Diagram



Product Selector

SV25C - NBR - 4K		
VALVE TYPE	SEAL OPTIONS	MAX WORKING PRESSURE
SV25C	<p>Leave blank for Viton® seals -10°C to +120°C</p> <p>NBR Nitrile seals -30°C to +105°C</p> <p>EP EPDM seals -45°C to +120°C</p> <p>KLZ Kalrez® seals -25°C to +120°C</p> <p>HNBR Hydrogenated Nitrile seals -20°C to +120°C</p> <p>Further seal options are available on request</p>	<p>4K 276 bar (4,000 psi)</p>

Repair and seal kits are available on request
For a seal kit add SK at the end of the model code and for a repair kit add RK



SOLENOID
STOP AND METERING
3 PORT DIRECTIONAL CONTROL
4 PORT DIRECTIONAL CONTROL
CHECK AND SHUTTLE
PILOT OPERATED CHECK
RELIEF
EXCESS FLOW
FILTERS
PRESSURE SENSING
PUMPS
ACTUATORS
TECHNICAL DATA