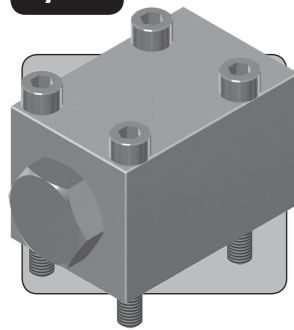


NR50M CHECK VALVE

1/2" UP TO 414 BAR 6,000 PSI



The NR50M is a 1/2" nominal bore check valve for manifold mounting. It will allow flow in one direction, and blocks flow in the opposite direction. It may also be referred to as a non-return valve.

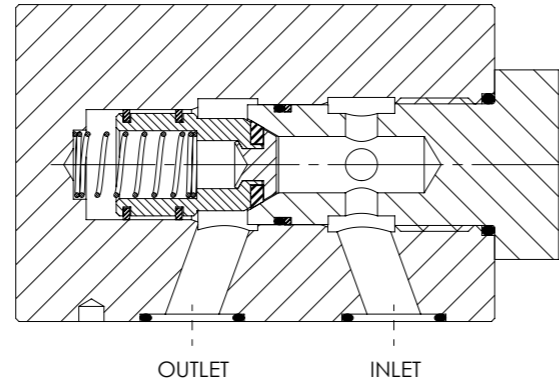
The valve uses a soft seated poppet to give low leakage with liquids and gases.

- Check or Non-Return valve
- Stainless steel construction
- Soft seated poppet design
- Low leakage
- Resilient poppet seal design resists seal damage under shock flow conditions
- Suitable for liquid or gas
- Suitable for use with air, nitrogen, sweet natural gas, mineral oils, water glycols and water
- Suitable for many other media, contact us for advice
- Various seal options available

Specifications

BASIC MODEL NUMBER	NR50M
SYMBOL	INLET OUTLET
MAX WORKING PRESSURE (LIQUID)	414 bar (6,000 psi)
MAX WORKING PRESSURE (GAS)	276 bar (4,000 psi)
CV (FLOW CAPACITY)	2.5
FLUID	Liquids and Gases See materials section
TEMPERATURE RANGE	See Product Selector opposite and Technical Data section
NOMINAL SIZE	1/2"
CRACKING PRESSURE	0.1 - 0.3 bar (2 - 5 psi)
WEIGHT	3.1 kg (6.8 lb)

Specifications may change without notice



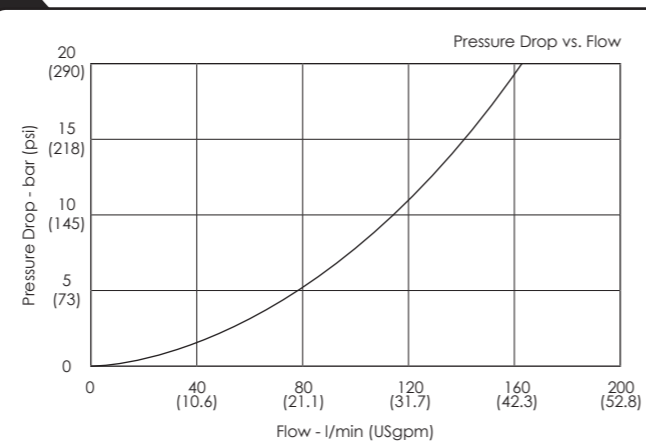
Materials

Externally Exposed Parts: 316 stainless steel with 300 series stainless steel fasteners.
Internally Wetted Parts: 316 stainless steel with 302 stainless steel spring, and Acetal.

The standard valve is designed for use with air, nitrogen, sweet natural gas, mineral oil, water glycols and plain water, and may also be used with a wide variety of media compatible with the materials of construction.

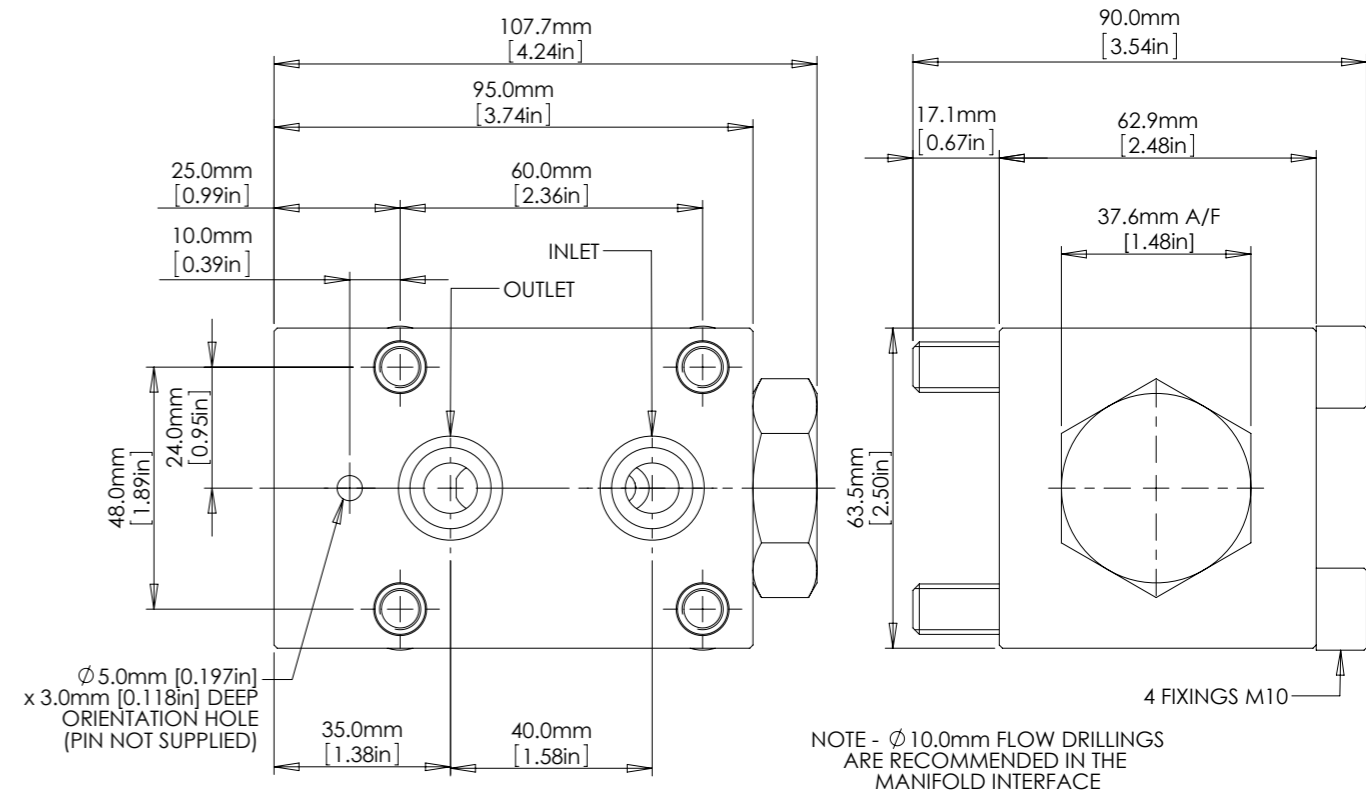
The standard valve has Viton® seals. Further seal options are available via the Product Selector. Compatibility with the working fluid at the operating temperature must be considered.

Typical Performance



Typical performance based on water

Installation Diagram



Product Selector

NR50M - NBR - 6K

VALVE TYPE	SEAL OPTIONS	MAX WORKING PRESSURE
NR50M	<p>Leave blank for Viton® seals -10°C to +120°C</p> <p>NBR Nitrile seals -30°C to +105°C</p> <p>EP EPDM seals -45°C to +120°C</p> <p>KLZ Kalrez® seals -25°C to +120°C</p> <p>HNBR Hydrogenated Nitrile seals -20°C to +120°C</p> <p>Further seal options are available on request</p>	<p>6K 414 bar (6,000 psi) Liquid</p> <p>276 bar (4,000 psi) Gas</p>

Repair and seal kits are available on request
For a seal kit add SK at the end of the model code and for a repair kit add RK



SOLENOID
STOP AND METERING
3 PORT DIRECTIONAL CONTROL
4 PORT DIRECTIONAL CONTROL
CHECK AND SHUTTLE
PILOT OPERATED CHECK
RELIEF
EXCESS FLOW
FILTERS
PRESSURE SENSING
PUMPS
ACTUATORS
TECHNICAL DATA