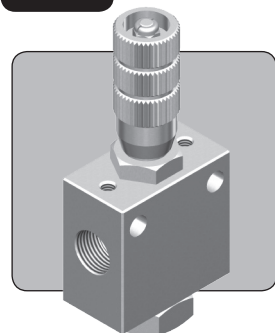


CMF37 METERING VALVE

3/8" UP TO 552 BAR 8,000 PSI



The CMF37 is a 3/8" nominal bore metering valve with a reverse free-flow check function. It provides metered flow in one direction, and free flow in the opposite direction, ideal for uni-directional speed control of a cylinder or actuator.

The valve can be adjusted manually after installation, and the setting can be locked.

Note that this is a flow control valve and is not intended to provide tight shut-off when closed.

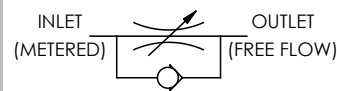
- Metering valve with reverse free-flow check feature
- Micrometer style adjustment with engraved graduations
- Non-rotating valve stem with lockable adjustment
- Ideal for uni-directional speed control
- Stainless steel construction suitable for liquid or gas
- Can be panel mounted
- Suitable for use with air, nitrogen, sweet natural gas, mineral oils, water glycols and many other media
- NACE MR01-75 compliant version available
- Various porting options available. Manifold mounted version available on request
- Various seal options available on request

Specifications

BASIC MODEL NUMBER

CMF37

SYMBOL



MAX WORKING PRESSURE (LIQUID) 552 bar (8,000 psi)

MAX WORKING PRESSURE (GAS) 276 bar (4,000 psi)

CV (FLOW CAPACITY) Up to 0.62
See Typical Performance Graph

FLUID Liquids and Gases
See materials section

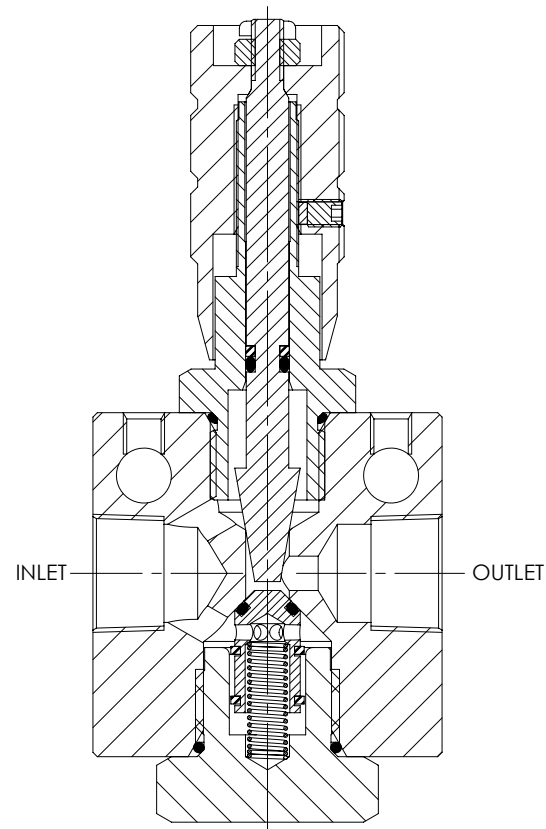
TEMPERATURE RANGE See Product Selector opposite and Technical Data section

PORT SIZE 3/8"

CHECK ELEMENT CRACKING PRESSURE 0.2 - 0.5 bar (3 - 7 psi)

WEIGHT 0.70 kg (1.5 lb)

Specifications may change without notice



Materials

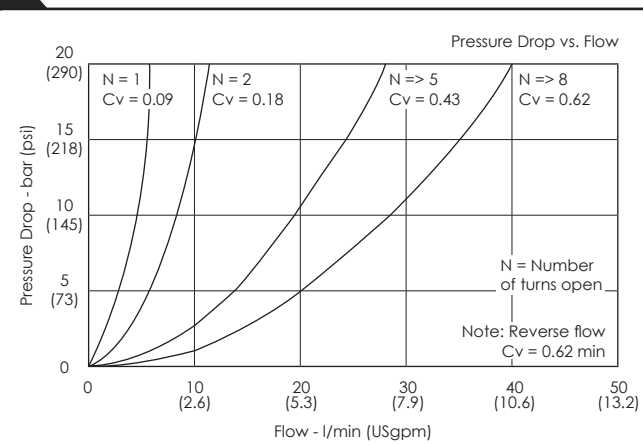
Externally Exposed Parts: 316, 302 and 17-4 PH stainless steel.

Internally Wetted Parts: 316, 302 and 17-4 PH stainless steel, and acetal.

The standard valve is designed for use with air, nitrogen, sweet natural gas, mineral oil, water glycols and plain water, but may be used with a wide variety of media compatible with the materials of construction. Other material options are available and for further advice, please contact us.

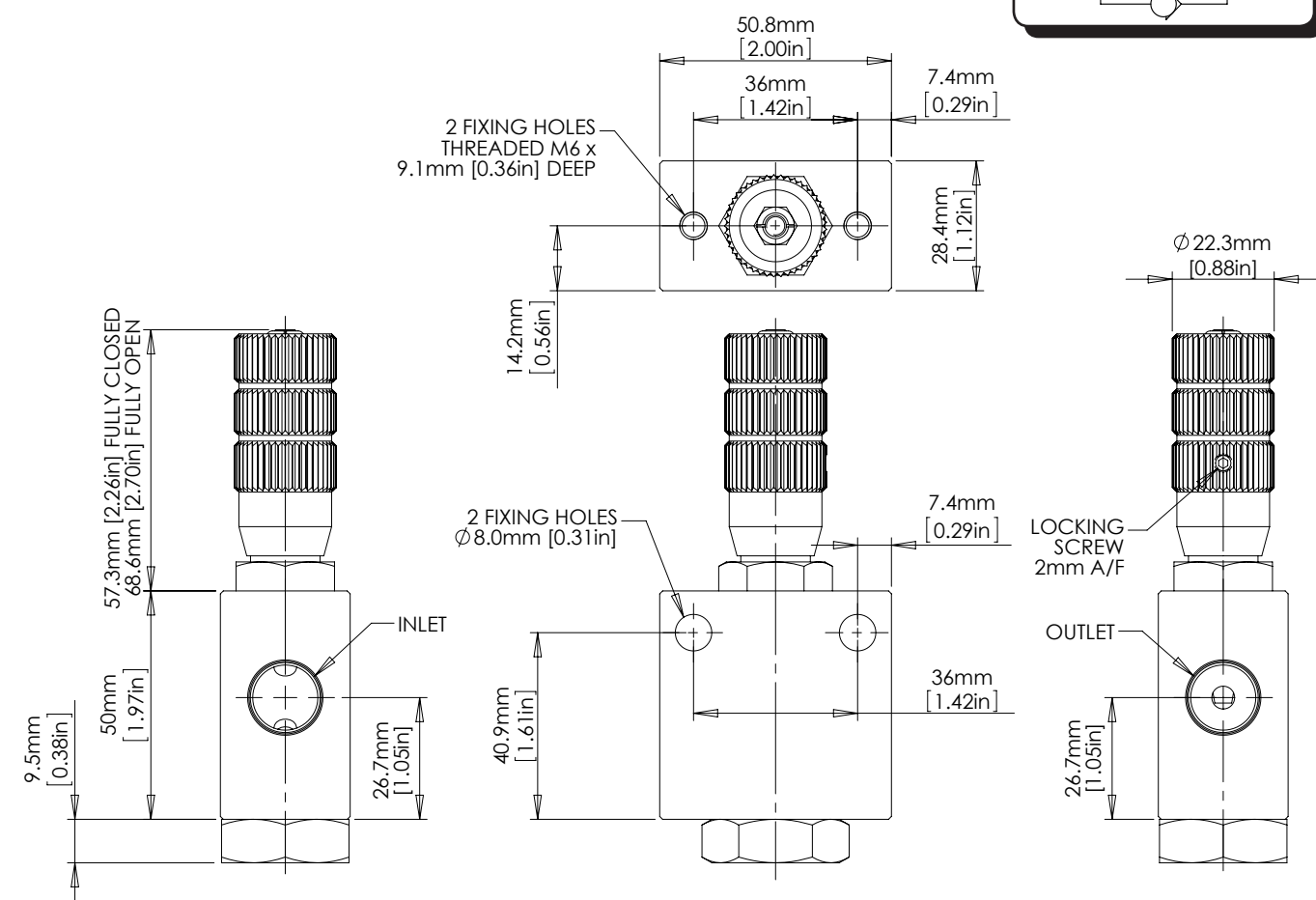
⚠ The standard valve has Viton® seals. Further seal options are available via the Product Selector. Compatibility with the working fluid at the operating temperature must be considered.

Typical Performance



Typical performance based on water glycol

Installation Diagram



Product Selector

CMF37 P - NBR - 8K			
VALVE TYPE	PORTING OPTIONS	SEAL OPTIONS	MAX WORKING PRESSURE
CMF37	<p>P 3/8" BSPP female</p> <p>N 3/8" NPT female</p>	<p>Leave blank for Viton® seals -10°C to +120°C</p> <p>NBR Nitrile seals -30°C to +105°C</p> <p>EP EPDM seals -45°C to +120°C</p> <p>KLZ Kalrez® seals -25°C to +120°C</p> <p>HNBR Hydrogenated Nitrile seals -20°C to +120°C</p> <p>Further seal options are available on request</p> <p>⚠ Exposure to high and low fluid temperatures will influence handle temperature. Operator safety must be considered.</p>	<p>8K 552 bar (8,000 psi) Liquid</p> <p>276 bar (4,000 psi) Gas</p>
Repair and seal kits are available on request			
For a seal kit add SK at the end of the model code and for a repair kit add RK			



Catalogue also available on digital media
 Visit our website for a full online search facility
www.bisvalves.co.uk



BS VALVES
 The Specifier's Catalogue

SOLENOID
 FLOW CONTROL
 3 PORT DIRECTIONAL CONTROL
 4 PORT DIRECTIONAL CONTROL
 CHECK AND SHUTTLE
 PILOT OPERATED CHECK
 RELIEF
 EXCESS FLOW
 FILTERS
 PRESSURE SENSING
 PUMPS
 ACTUATORS
 TECHNICAL DATA