

# BNV10FC

## STOP VALVE

1/8"

UP TO 1,379 BAR  
20,000 PSI



The BNV10FC is a cartridge style stop valve. It provides tight shut-off when closed via a T-bar handle.

Coarse adjustment allows fast operation. The valve may be used with the same functionality in either direction.

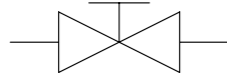
- Manual stop or shut-off valve
- Lockable adjustment
- Cartridge style ideal for use in manifolds
- Non-rotating valve stem protects valve seat
- Metal to metal seating with hardened stem for durability
- Suitable for uni-directional or bi-directional shut-off
- Short handle option for pressures up to 862 bar (12,500psi) allows compact system designs
- Stainless steel construction
- Suitable for use with mineral oils, water glycols and plain water
- Compatible with many other media, contact us for advice
- Various seal options available

### Specifications

**BASIC MODEL NUMBER**

**BNV10FC**

**SYMBOL**



**MAX WORKING PRESSURE**

1,379 bar  
(20,000 psi)

**CV (FLOW CAPACITY)**

Up to 0.20  
See performance graph

**FLUID**

Liquids only  
See materials section

**TEMPERATURE RANGE**

See Product Selector opposite  
and Technical Data section

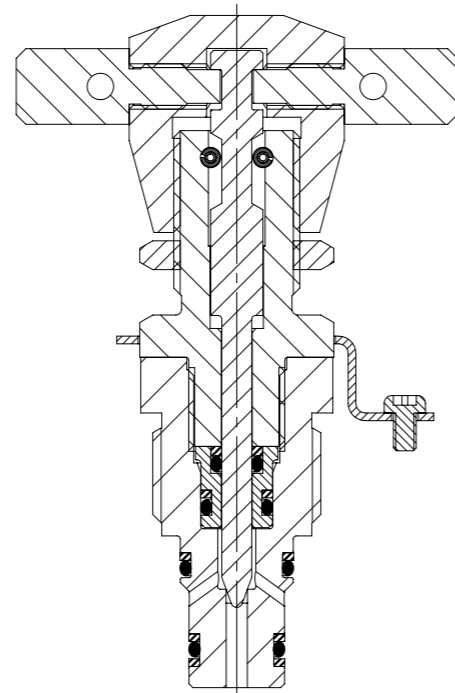
**NOMINAL SIZE**

1/8"

**WEIGHT**

0.29 kg  
(0.64 lb)

Specifications may change without notice



### Materials

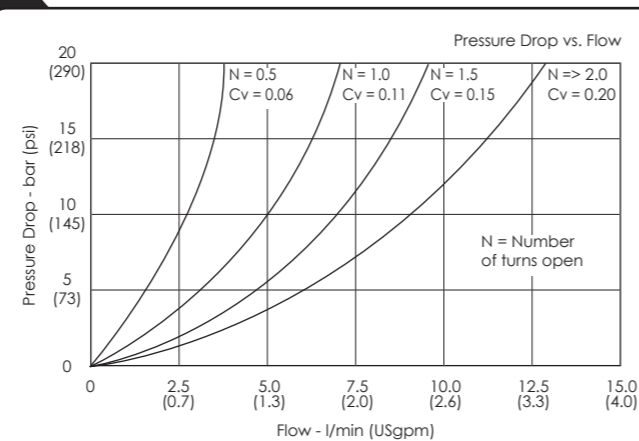
Externally Exposed Parts: 316 stainless steel and aluminium bronze.

Internally Wetted Parts: 316 and 17-4 PH stainless steel and acetal.

The standard valve is designed for use with mineral oil, water glycols and plain water, but may be used with a wide variety of media compatible with the materials of construction. Other material options are available, please contact us for advice.

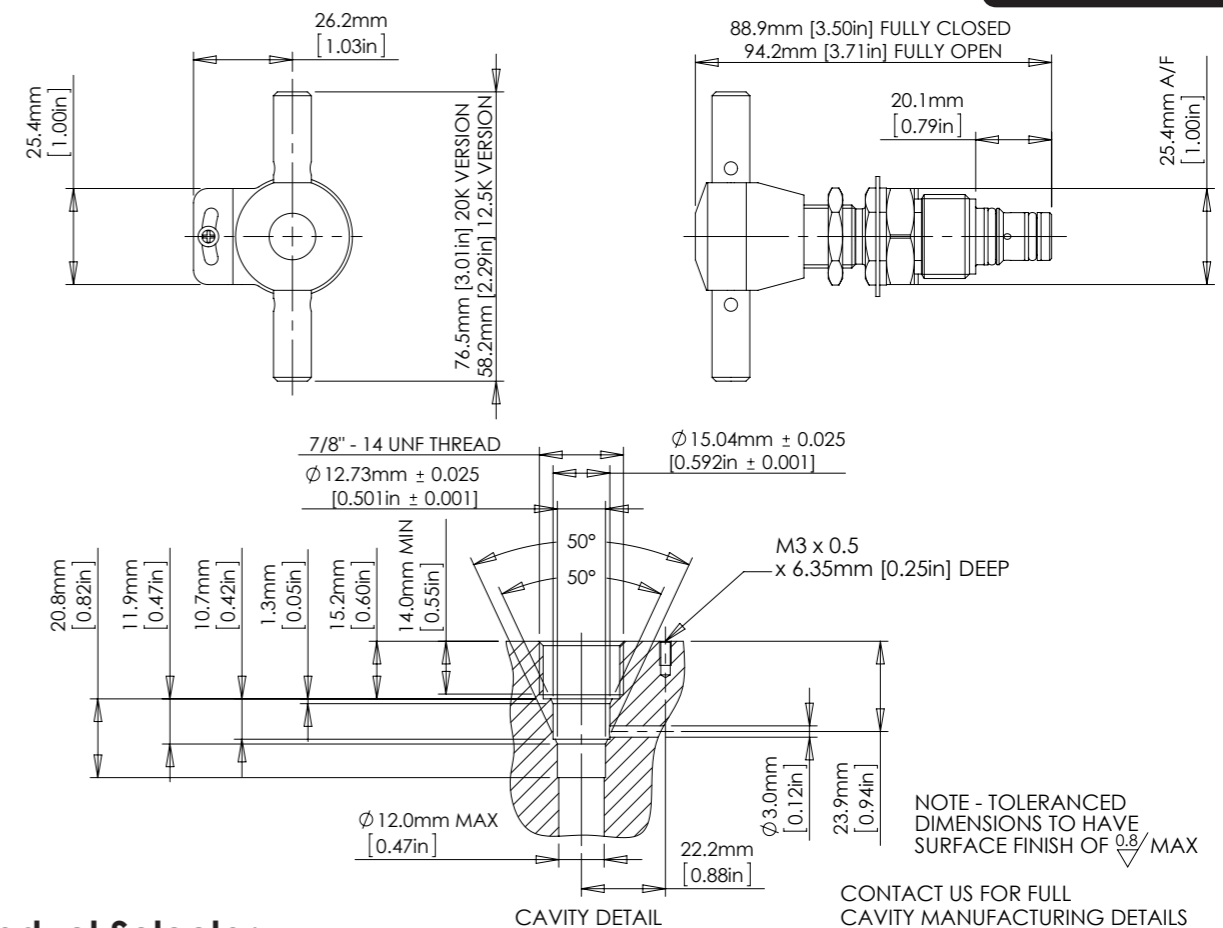
⚠ The standard valve has Viton® seals. Further seal options are available via the Product Selector. Compatibility with the working fluid at the operating temperature must be considered.

### Typical Performance



Typical performance based on water

### Installation Diagram



### Product Selector

#### BNV10 FC - NBR - 12.5K

VALVE TYPE	PORTING OPTIONS	SEAL OPTIONS	MAX WORKING PRESSURE
<b>BNV10</b>	FC option must be selected <b>FC</b> Full cartridge Seat in cartridge	Leave blank for Viton® seals -10°C to +120°C <b>NBR</b> Nitrile seals -30°C to +105°C <b>EP</b> EPDM seals -45°C to +120°C <b>KLZ</b> Kalrez® seals -25°C to +120°C <b>HNBR</b> Hydrogenated Nitrile seals -20°C to +120°C Further seal options are available on request ⚠ Exposure to high and low temperature will influence handle temperature. Operator safety must be considered	<b>12.5K</b> 862 bar (12,500 psi) Liquid  <b>20K</b> 1,379 bar (20,000 psi) Liquid

Repair and seal kits are available on request  
For a seal kit add SK at the end of the model code and for a repair kit add RK



Catalogue also available on digital media  
Visit our website for a full online search facility  
[www.bisvalves.co.uk](http://www.bisvalves.co.uk)

**BIS VALVES**  
The Specifier's Catalogue

SOLENOID  
FLOW CONTROL  
3 PORT DIRECTIONAL CONTROL  
4 PORT DIRECTIONAL CONTROL  
CHECK AND SHUTTLE  
PILOT OPERATED CHECK  
RELIEF  
EXCESS FLOW  
FILTERS  
PRESSURE SENSING  
PUMPS  
ACTUATORS  
TECHNICAL DATA